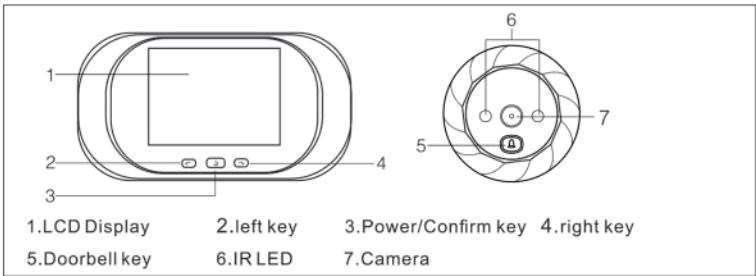


Digital Door Viewer User’ s Manual

Thanks for purchasing the digital door viewer from us,In order to help you using the product in right way,please read this manual carefully before using it.

The product frame

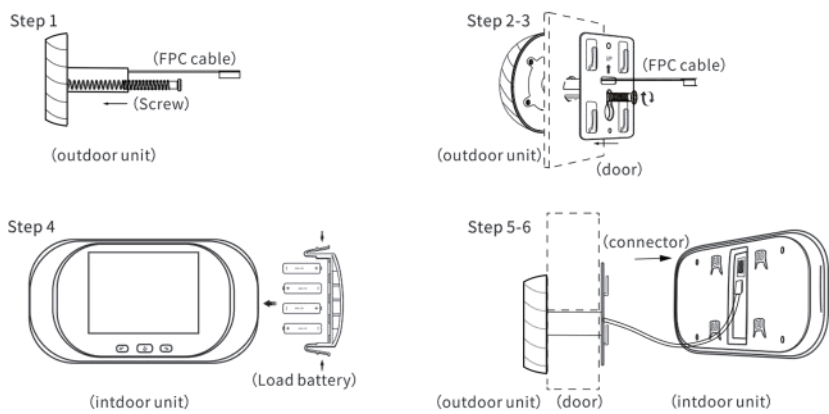


Installation Instruction

- step1:According to the door thickness to choose a suitable bolt,then screw the bolt into the screw hole on the barrel of outdoor unit.
- step2:Insert the barrel together with the FPC through the door peephole,then hold the outdoor part on the door in right direction.
- step3:Take out the metal bracket(the"UP"arrow on the bracket means upward),past the FPC through the rectangular hole,pass the screw through the round hole of the metal bracket,then screw the bolt to lock the metal bracket with outdoor part tightly.

— 1 —

- step4:Connect the FPC from outdoor unit to the connector of the indoor unit in right direction.
- step5:The four slots on the back of indoor unit is aligned with four hooks on the metal bracket and buckle up,then pull down indoor unit to lock tightly.



Function Operations

— 2 —

- 1.Power on/off:when pressing"doorbell key"or"power key",the indoor part will power on and ring,keep on pressing "power key"for 3 seconds,the device will power off.
- 2.Take photo:pressing"doorbell key",the device will power on and take photo;in power on mode, pressing"power key"it will take photo too.
- 3.Review photo:In power on mode,press"left key"or"right key"to review photos.
- 4.Delete all photos:in power on mode or when reviewing photos,press"left key"for three seconds to delete all photos in memory.
- 5.Delete single photo:when reviewing photos,press"right key"for three seconds to delete one photo in memory.
- 6.Set power off time:In power on mode,press"right key"for three seconds to select the power off time :15s/25s/off.

Technical Specifications

LCD screen	2.8 inch	Material	ABS plastic
Resolution	320*240	Vision angle	90 °
Memory	Built-in cyclic storage in device	Product Size	Indoor part:127*68*13mm Outdoor part: φ58*13mm
Battery	1.5V AAAX4	Door hole Diameter	14-22mm
Camera	0.3 MP	Door thickness	35-120mm
IR LEDs	2 PCS,850nm	Temperature	-20°C ~55°C

— 3 —

Products Accessories

Indoor part *1	outdoor part *1	mental Bracket *1
User manual *1	Product warranty card *1	Screws *3

Safety Precaution

- 1.Non proffsional,please do not dismantle the device.
- 2.Do not use this product in high temperature/humidity/salt.
- 3.Please make sure never to pull the cable fiercely in case to break it.
- 4.Please use standard model battery. Poor quality battery may lead to the procut damaged or can not be powered on.
- Quality warranty:one year
- Picture is just for reference,good in kind prevail,manufacture reserve the right to improve the appearance and functionality and upgrades without notice.

— 4 —