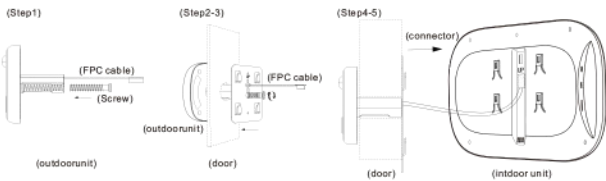


Processor: HI3518E
Memory: RAM 512M
OS: Liteos
Camera Pixel: 720P
LCD Screen: 4.3Inch , IPS, 480*272
Battery capacity: ≥3500mAh
Monitoring intercom: support
Motion detection: support
External storage: Micro SD card (32GB maximum)
IR LED wave length: 940nm (invisible light)
Battery Charger: 5V / 2A
Suitable for door hole: diameter 14-35mm
Applicable door thickness range: 35-100mm
Wireless WIFI: ieee802.11b/g/n 2.4GHz

How to install the device on the door

- Step 1: According to the thickness of the door to select a suitable bolt, then, screw the bolt into the hole (refer installation icon 1)
- Step 2: Tear off double-side adhesive protective film on the back of the outdoor part, insert the unit barrel together with the FPC cable through the peephole of the door, then stick the outdoor part on door(motion detection is upward, doorbell key is downward)
- Step 3: Take out the metal bracket (the "UP" arrow on the bracket means upward), pass the FPC cable through the rectangular hole, the right screw through the round of the metal bracket, then lock the metal bracket with the outdoor unit tightly.
- Step 4: Insert TF card to the indoor unit.
- Step 5: Connect the FPC cable from outdoor part to the connector of the indoor part (pay attention to the right direction)
- Step 6: The four slots on the back of indoor part is aligned with four projection on metal bracket and buckle up, then pull down the outdoor part to lock tightly.



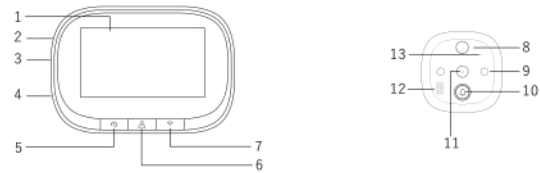
Packing list

Indoor unit x1 Outdoor unit x1 Metal bracket x1 Screw x3 Power Cable x1 User manual x1

Device settings and App settings

- 1.Device settings: when the mobile phone and the device are connected, the device can be set online.
Setting method: click the gear symbol in the upper right corner of the video window (as shown in figure8), then the device setting interface pops up (as shown in figure10). Note: when the phone is disconnected from the device, the device cannot be set.
- 2.App settings: when the mobile phone and the device are disconnected, click "user" in the lower right corner of the App (as shown in figure7), then the App setting interface pops up (as shown in figure9).

Product outline



- 1.LCD display 2.Reset key 3.Battery charging port 4.TF Card slot
5.Left key(Restore factory settings key) 6.Middle key(Monitor key/ power key)
7.Right key (Network configuration key) 8.PIR sensor 9. IR LED 10. Doorbell key
11.Camera 12.Speaker 13.Micro phone

Key function description

Left key(Restore factory settings key): When the screen is on, long press this key for 10 seconds, the device will return to the factory settings.

Middle key(Monitor key/ power key): Long press this key for 3 seconds to turn on / off the device, click this key to turn on / off the screen.

Right key (Network configuration key): in the power on state, long press this key for 5 seconds to enter the network configuration mode, and long press this key again for 5 seconds to exit the network configuration mode.

Doorbell key: press this key to wake up the doorbell host, ring and call the connected mobile phone.

Device Parameter

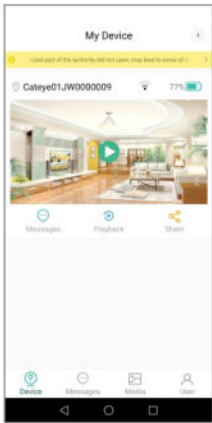


Figure7

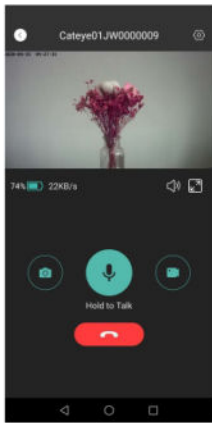


Figure8

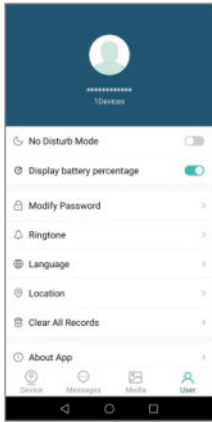


Figure9

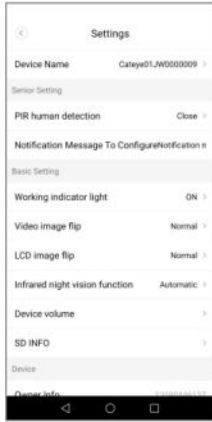


Figure10

- Step3. After hearing the voice prompt of "please use app to setup the network", click "HEARING VOICE PROMPT" (as shown in figure2) on the App, and then input WIFI user name and password (as shown in figure5).
- Step4: After entering the correct WIFI user name and password, click "next", and the host will send a voice prompt "please turn the QR code towards the camera lens and wait for scanning". At this time, aim the camera lens at the QR code, keep a distance of 15-20cm, and observe whether the lens is aimed at the QR code on screen of the host (as shown in figure6). When the host prompts "connecting the network", it means the camera scan QR code successfully. A few seconds later, the host will prompt "connecting network successfully".
- Step5: Click the video window on the App to connect the mobile phone and the device (as shown in figure7), then you can watch video through mobile phone (as shown in figure 8).

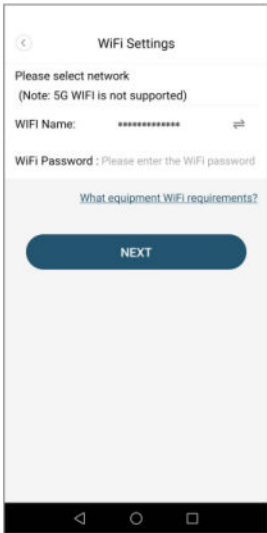


Figure5



Figure6

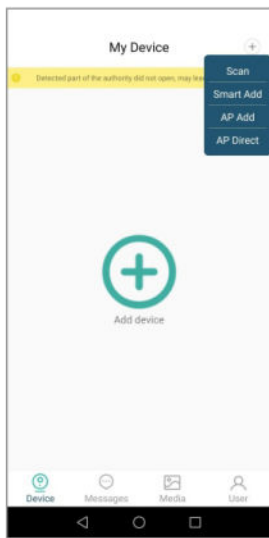


Figure1

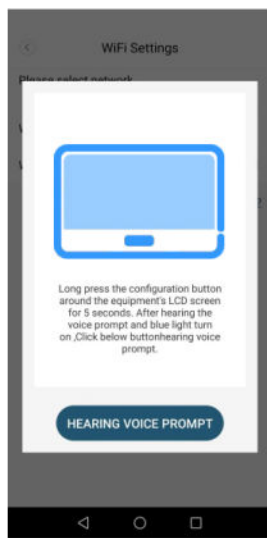


Figure2

- Step2: Take out the outdoor unit and indoor unit (host) of the device, and connect the cable of outdoor unit to the back of the host, as shown in figure3. Long press the [middle key] of the host for 3 seconds to start up. Then long press the [right key] for 5 seconds to enter the network configuration mode, at this time, the host will have a voice prompt "please use app to setup the network", and then the voice prompt "waiting for connection".

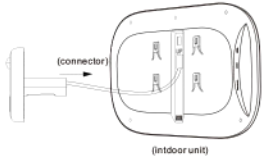


Figure3



Figure4

App download and installation



- Step1: Scan the above QR code, download and install the APP
- Step2: Modify the "App launch" setting.
Setting path: mobile >>> settings >>> Apps >>> App launch
Find the App (watch home safety), change the setting from "Manager automatically" to "manage manually" and take effect the "Auto-launch", "Secondary launch" and "Run in background" (If don't change this setting, your mobile may can't receive the device's calling)
- Step3: Open all permission required for this App
Setting path: mobile >>> settings >>> Apps >>> Permissions
Open all permission required for this App (Note: especially to open the "Drop zone" for this App. Otherwise, your phone may not pop out the call window for the device)

Account registration / login

New users need to register a new account, and then log in with a user name and Password

Device addition and network configuration

- Step1: Open the App, click the "+" in the upper right corner, select "Smart Add" (as shown in figure1), and then select "Smart Door Viewer", the interface shown in figure2 will appear.

WIFI DIGITAL DOOR VIEWER User Manual