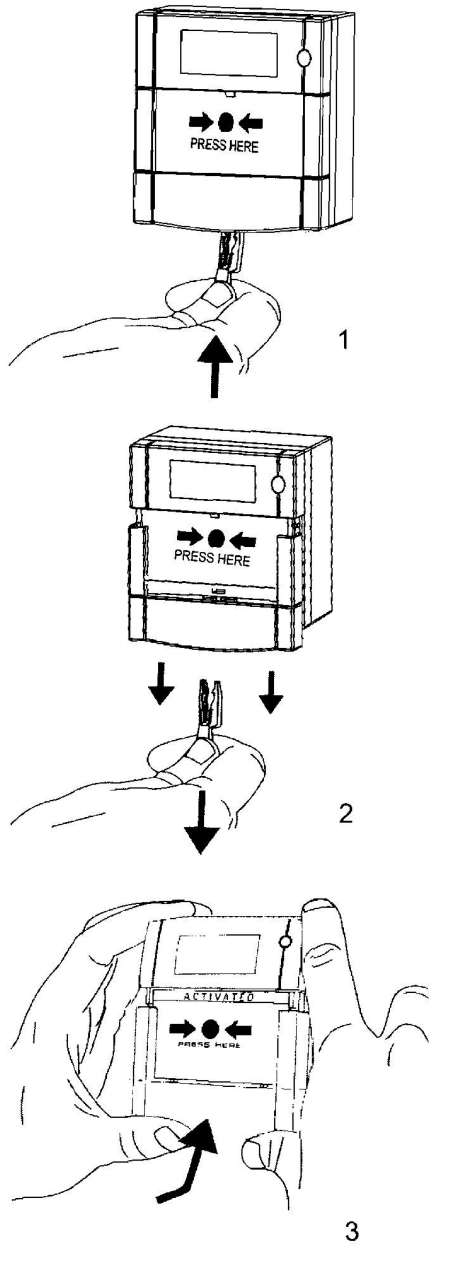
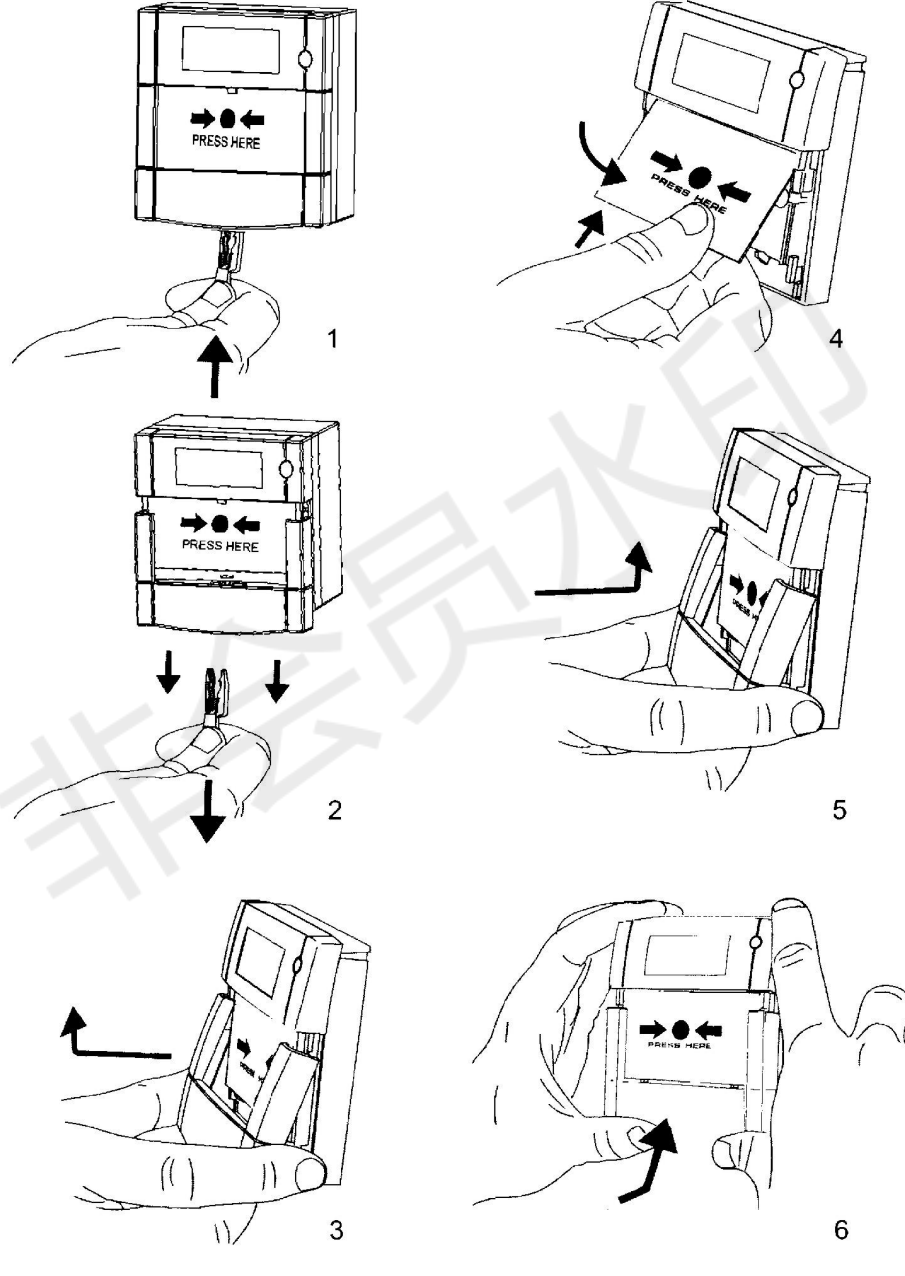


Larmknapp - Röd och Grön - 2 växlande LK-50R / G

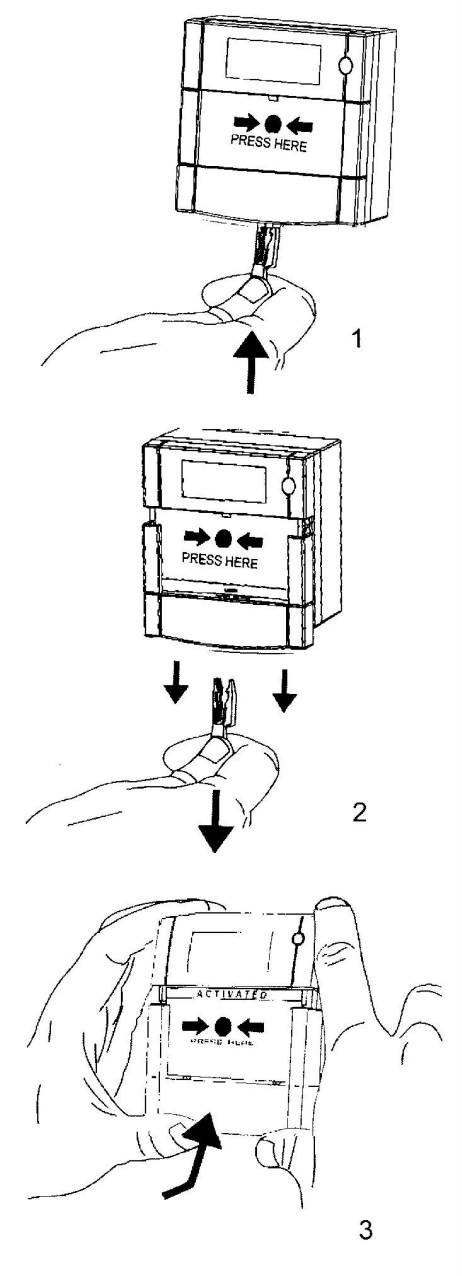
TO TEST



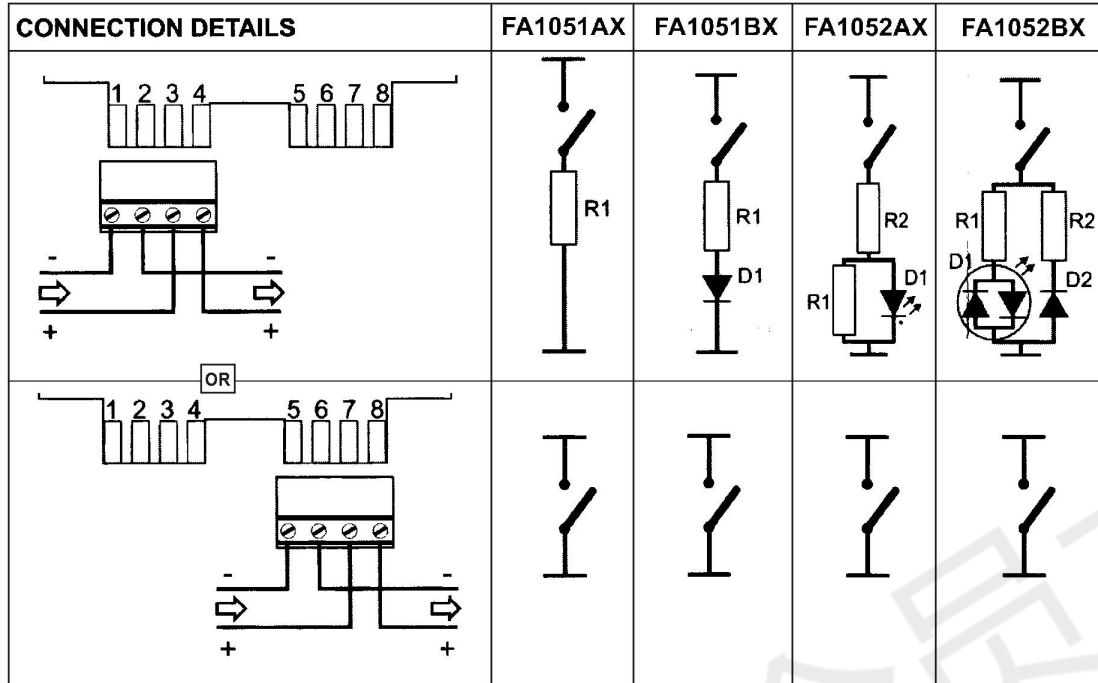
TO REPLACE GLASS / RESETTABLE ELEMENT



TO RESET

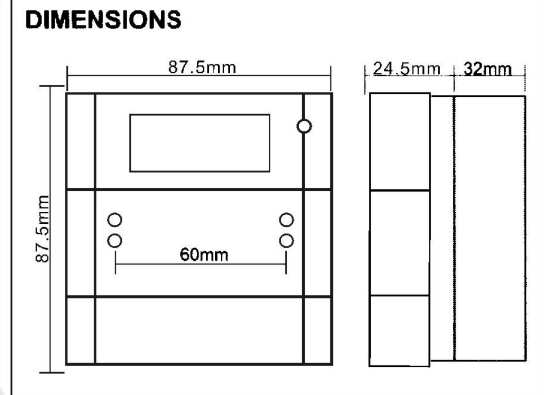


Larmknapp - Röd och Grön - 2 växlande LK-50R / G



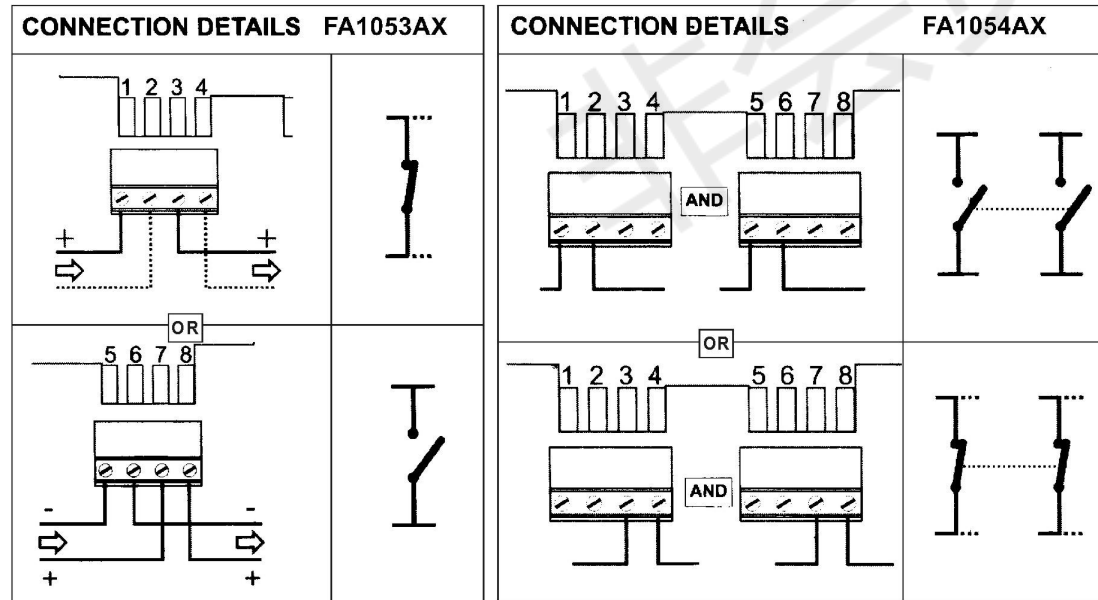
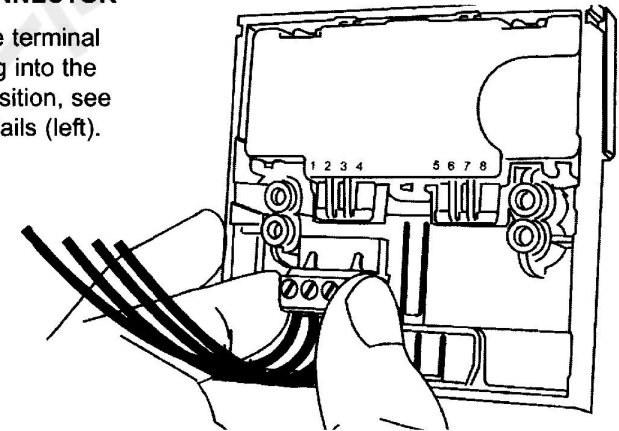
X in the FA105 code (left) represents the final digits of the part number, which indicate FA105 colour, component values, mounting options and element type.

eg FA105A -R470
 II
 (FA105 A, Red, 470R,



PUSH FIT CONNECTOR

After wiring the terminal connector, plug into the appropriate position, see connection details (left).



TECHNICAL DATA

- 30VDC Max
- 2A Max
- IP24D
- 110/160g

- 30°C to 70°C
- Red, Ral 3001
- Yellow, Ral 1006
- Green, Ral 6016
- White, Ral 9010
- Blue, Ral 5002